



Freude am Spülen

erich baumgartner technik - gewerbliche Spülsysteme

Generalimporteur für



Gewerbliche

Spülmaschinen

Operating Instructions Beer Bottle Rinsing Machine Conversion to barrel cleaning

Edition: June 2016

Erich Baumgartner
Gastronomiemaschinengroßhandel
Hauptstrasse 4
A - 5222 Munderfing
Phone: 0043 / 7744 / 20 12 10
Fax: 0043 / 7744 / 20 12 12
E-mail: verkauf@gastrohandel.at

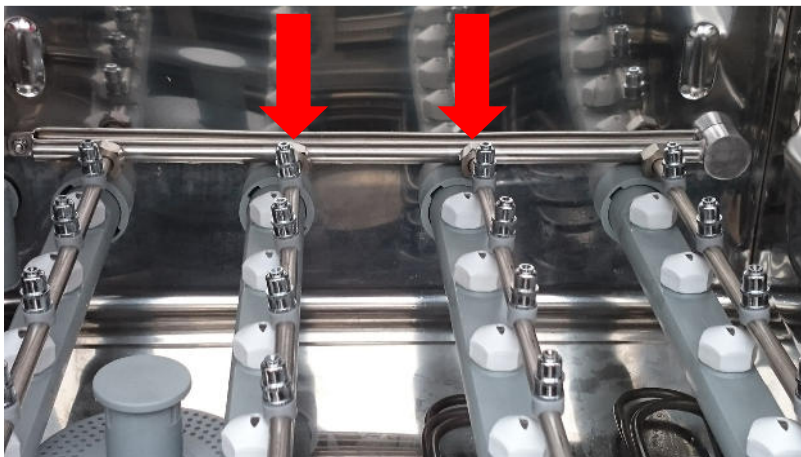


For barrels from 5 l to 30 l
DIN and EURO standard
Max. height: 400 mm

Remove the surface filter from the machine.



Loosen the 2 centre rinsing arms with the help of an open-end spanner with a wrench opening of 20 by 2 to 3 half turns to the left.



After having removed the rinsing arms, it is possible to manually loosen the nuts a bit more.

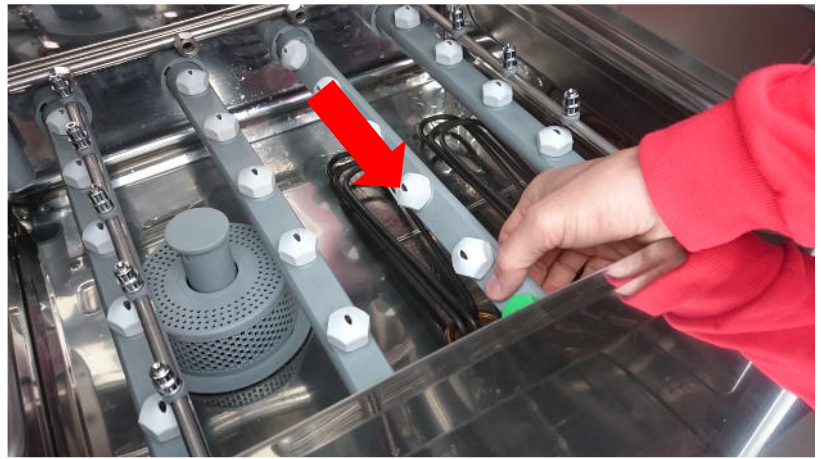


Remove the 2nd washing arm from the right as follows:

Turn the washing arm by a ¼ turn to the left.



Pull the washing arm out of the seat.



Lift the washing arm out of the fixture (below the doorway).



Then, insert the new washing arm by plugging the washing arm into the seat,



turn it ¼ turn to the right and engage it into the fixture.



Take the rinsing line and insert it into the 2 openings of the supply line.



Tighten the 2 nuts.



Tighten with an open-end spanner with a wrench opening of 20 – (but do not over tighten).



It is necessary to take out the rinsing arm upwards for barrels with a height of more than 350 mm.

Open the grey screw connection.



To do so, insert the Allen screw included in the delivery.



Preparing the support unit:

Put the carrier frame upside down on the beer barrel.

Align the centre of the opening to the centre of the carrier frame.



Loosen the tap with a screw and adjust it to the barrel diameter.



Bleed the barrel.

Unscrew the fitting from the barrel and put it on the carrier frame.

(Attention: **If necessary, commission a specialist for these tasks**).

Put the fitting with the bleed screw, which has been tensed already, into the washing chamber for cleaning.



The proceeding to clean the beer barrel is the same as the one for rinsing bottles, refer to the main operating instructions on page 4.

