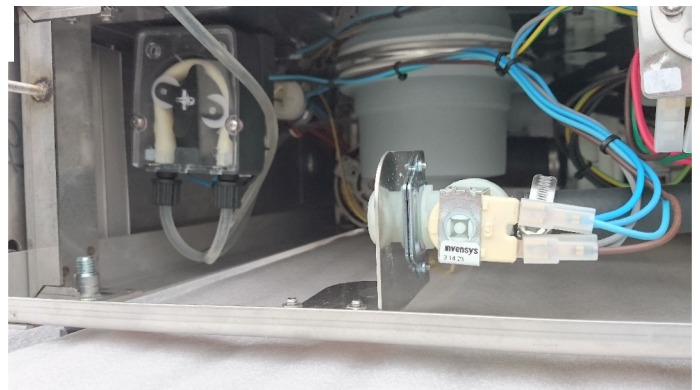


## GS21 Bottle Washing Machine Product information



Unique wash and rinse system

Integral Peristaltic Detergent Pump



Rinse Booster Pump (right)



Powerful Wash Pump, 330 ltr./min  
of circulationin.



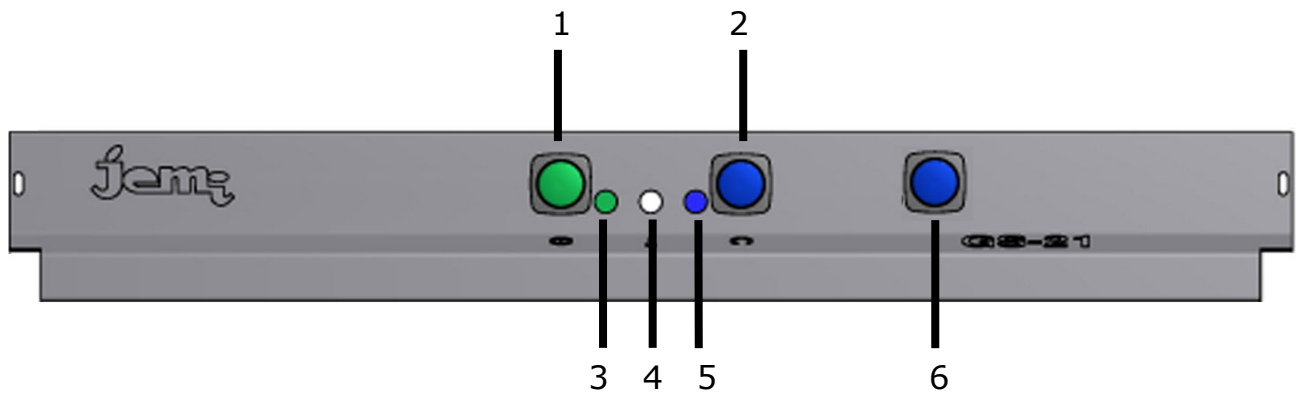
Heavy duty steel basket built for bottles from 0,1 ltr. to 2,0 ltr capacity.

Plastic Crate Basket included.



Stainless steel CNS filter to collect the labels from the bottles.





Switch (Nr.6)

Permanent Wash Cycle, gives the facility to wash heavily soiled bottles on a continuous cycle.

Washing functions:

The GS21 Bottle Washing Machine has a 29 litre wash tank capacity.

The detergent pump primes the initial tank of water, then adds chemical during each cycle to ensure bottles are hygienically washed cycle after cycle.

During every wash cycle 8,4 litres of fresh water is added and surplus soiled water is drained from the machine.

Our specialist Detergent is manufactured in Salzburg (Austria) for specific use in the GS 21, it is supplied in 6kg containers.

Technical Information:

Output of Bottles /hour (standard size bottle)	190 pcs.
Cycle time.	6 min 30 sec.
Wash pump power:	736 W
Circulation:	330 ltr. / min.
Heating system:	2 x 4500 W
Total power:	9736 W
Phase:	3, 415 Volt
Wash Tank Capacity :	29 ltr.
Water consumption per circle:	8 ltr.
Minimum water inlet pressure:	2,5 bar
Waste outlet:	3/4" 50 mm Ø
Maximum washing height:	380 mm Bottles
Baskett dimensions:	500 x 500 mm
Standard basket:	1 Basket for bottle 1 Plastic Crate Basket

Overall Dimensions:

Width:	580mm
Depth:	630mm
Height:	820mm



[www.facebook.com/flaschenwaschen](http://www.facebook.com/flaschenwaschen)